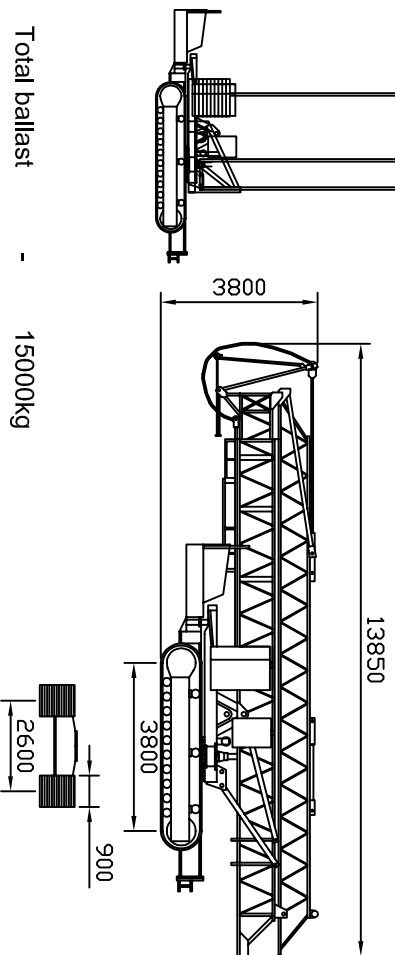
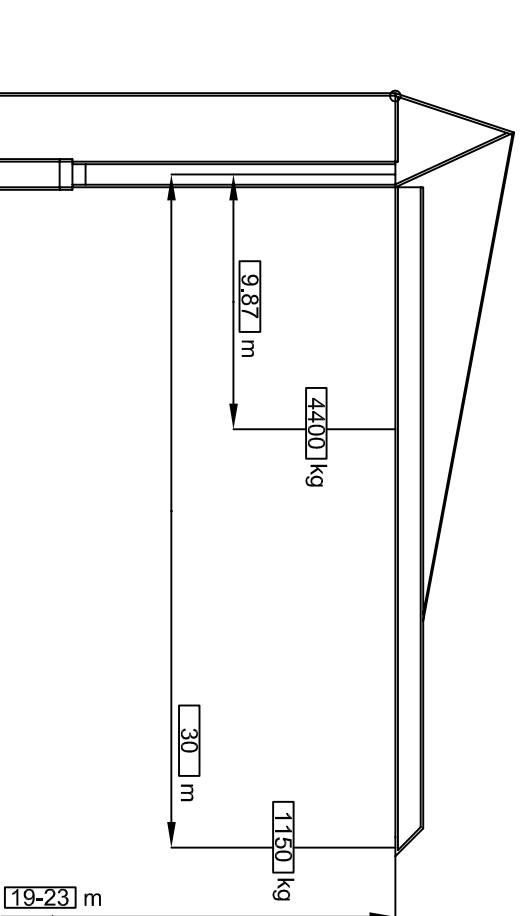




MUNSTERS

CRL 30-36 SELF ERECTING TOWER CRANE



Total ballast - 15000kg
 Central ballast - 5000kg
 Max. travelling speed 15m/min.
 Max. operating temperature -20° to 40° C

Transport width - 3500m

Transport weight

45000kg

Necessary electric power

380 V
50 Hz

Mains supply

22 kVA
50 A

Maximum ground bearing pressure under tracks

0.06 N/mm²

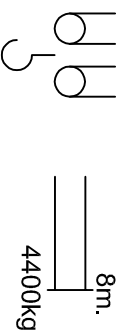
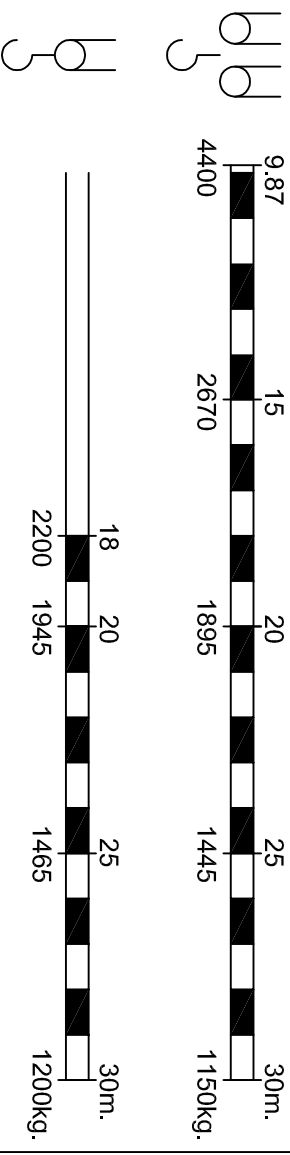
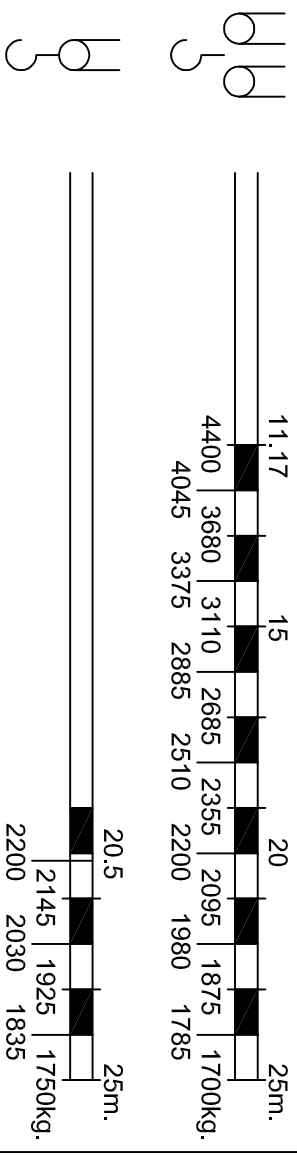
Cable size

0 - 50m
4 x 16mm²

Generator set

46 kVA
50 A

MUNSTERS HMC BV, Hoogstraat 5-15, Postbus 2, 5469 ZG Erp-Holand, Tel. 04135-1933 - Telex 74669 Munst NL



Travelling with load

- Maximum radius: 8m
- Maximum gradient 5% in direction of travel
- Ground to be capable of withstanding track pressures
- Lifted load to be maximum 1m from ground
- Maximum wind speed 12.5 m/s
- Maximum load moment of 65%