

Courbes de charges

Lastkurven

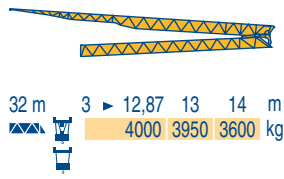
Load diagrams

Curvas de cargas

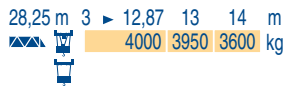
Curve di carico

Curva de cargas

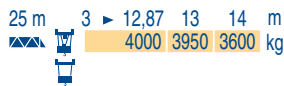
LXS 1



10,7	11	12	13	14	15	16	17	18	19	19,5	20	22	25	27	30	32 m	
4000	3870	3460	3125	2845	2610	2410	2230	2080	1940	-	1820	1615	1375	1250	1090	1000 kg	
											2000	1940	1730	1485	1350	1190	1100 kg



11,5	12	13	14	15	16	17	18	19	20	21	22	25	27	28,3 m	
4000	3790	3420	3120	2860	2640	2450	2280	2135	2000	1885	1780	1520	1375	1300 kg	
											2000	1890	1620	1480	1400 kg



12	13	14	15	16	17	18	19	20	21	21,8	23	25 m	
4000	3600	3280	3010	2775	2580	2400	2250	2110	1985	-	1775	1600 kg	
											2000	1875	1700 kg

Flèche relevée

Ausleger in Steilstellung

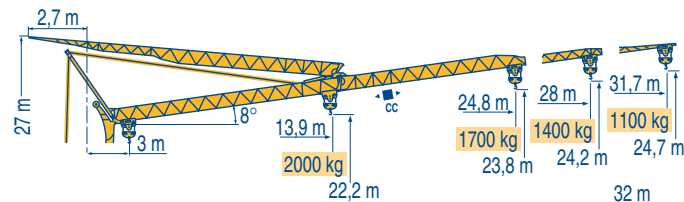
Luffing jib

Flecha izada

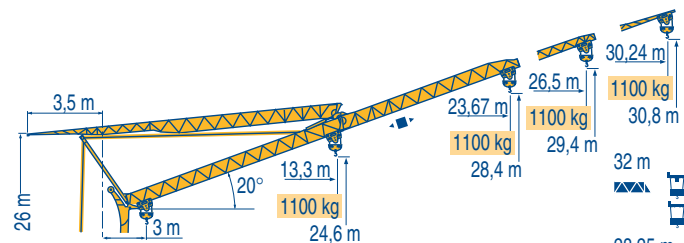
Braccio impugnato

Lança inclinada

LXS 1



32 m	3	18,3	19	19,5	21	23	25	26	28	30	31,7 m
		2000	1910	-	1685	1505	1355	1290	1175	1075	1000 kg
				2000	1830	1640	1485	1415	1295	1190	1100 kg
28,25 m	3	19,8	20,8	21	23	25	26	28 m			
		2000	-	1860	1660	1500	1425	1300 kg			
				2000	1975	1770	1605	1530	1400 kg		
25 m	3	20,7	21,6	23	24,8 m						
		2000	-	1755	1600 kg						
				2000	1860	1700 kg					



32 m	3	30,24 m	30,8 m	30,2 m
		1100 kg	1100 kg	1000 kg
				1100 kg
28,25 m	3	26,5 m		
		1000 kg		
		1100 kg		
25 m	3	23,7 m		
		1000 kg		
		1100 kg		








Igo 36



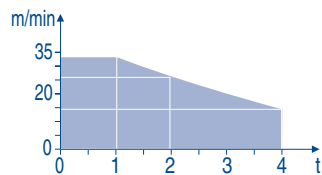
F Chariot distributeur Chariot distributeur et courbes de charges Réactions en service Réactions hors service A vide sans lest (ni train de transport) avec flèche et hauteur maximum.	D Verfahrbare Laufkatze Verfahrbare Laufkatze und Lastkurven Reaktionskräfte in Betrieb Reaktionskräfte außer Betrieb Ohne Last, Ballast (und Transportachse), mit Maximalausleger und Maximalhöhe.	GB Traversing trolley Traversing trolley and load diagrams Reactions in service Reactions out of service Without load, ballast (or transport axes), with maximum jib and maximum height.	E Carro distribuidor Carro distribuidor y curvas de cargas Reacciones en servicio Reacciones fuera de servicio Sin carga, sin lastre, (ni tren de transporte), flecha y altura máxima.	I Carrellino distributore Carrellino distributore e curve di carico Reazioni in servizio Reazioni fuori servizio A vuoto, senza zavorra (ne assali di trasporto) con braccio massimo e altezza massima.	P Carro distribuidor Carro distribuidor e curva de cargas Reações em serviço Reações fora de serviço Sem carga (nem trem de transporte)- sem lastro com lança e altura máximas.
--	---	--	--	---	---

Mécanismes
Antriebe
Mechanisms
Mecanismos
Meccanismi
Mecanismos

LXS 1

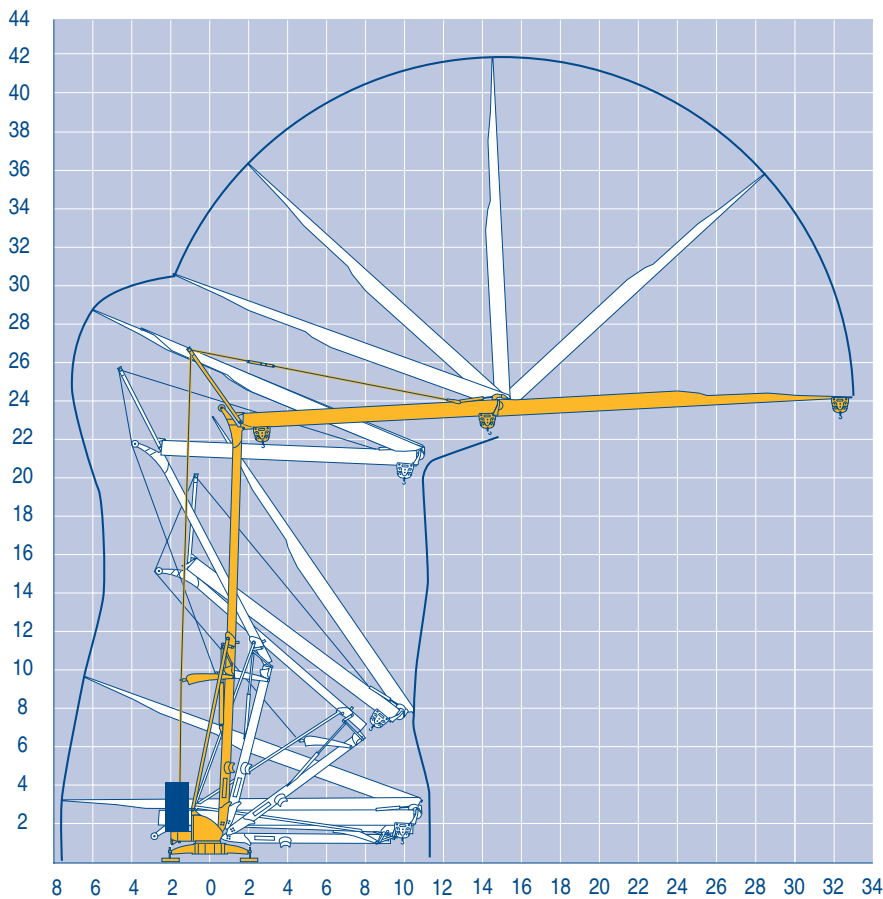
												ch - PS hp	kW	
	15 LVF 10 Optima	m/min	3,6	18	30	49	66						15	11
		kg	2000	2000	2000	1100	500							
		m/min	3,6	18	30	54	66	1,8	8,9	15	27	33		
		kg	2000	2000	2000	1000	500	4000	4000	4000	2000	1000		
	3 DVF5	m/min	19 - 41										3	2,2
	RVF2-50	tr/min U/min rpm	0 → 0,8										4	3
CEI 38  IEC 38		kVA												
400 V (+6% -10%) 50 Hz		15 LVF 10 : 22 kVA					2000/14							

15 LVF 10 Optima



Montage
Montage
Erection
Montaje
Montaggio
Montagem

LXS 1



Igo 36

POTAIN 

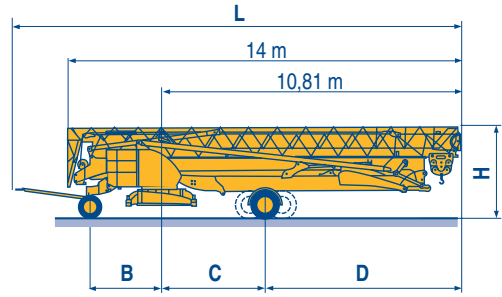


F	D	GB	E	I	P
Levage	Heben	Hoisting	Elevación	Sollevamento	Elevação
Distribution	Katzfahren	Trolleying	Distribución	Distribuzione	Distribuição
Orientation	Schwenken	Slewing	Orientación	Rotazione	Rotação
Conforme aux directives CEE sur le niveau acoustique	Gemäss EWG-Richtlinien für den Schall-Leistungspegel	In compliance with the EEC Instructions on noise level	Conforme con las directivas CEE sobre el nivel acustico	Conforme alle direttive CEE sul livello acustico	Conforme as directivas CEE sobre o nível acústico

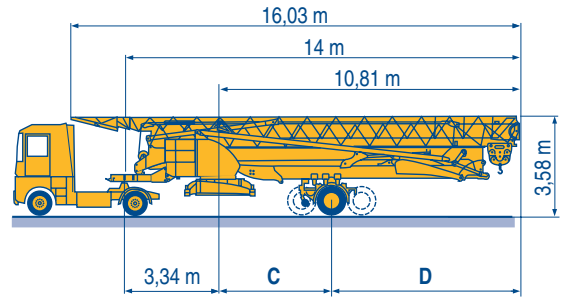
Transport
Transport
Transport
Transporte
Trasporto
Transporte

LXS 2

		L (m)	B (m)	C (m)	D (m)	H (m)
DS61/S120	○					
DS61/S125	DS61/S120	15,9	2,45	3,73	7,08	3,05/3,2
DJ80/S120	○					
DJ80/S125	DJ80/S120	15,9	2,45	4,15	6,66	3,1
DJ100/S120	DJ100/S120	16,33	2,45	4,15	6,66	3,23
DJ105/S125	DJ105/S125	16,35	2,45	4,15	6,66	3,2
DJ126M/S125	DJ126M/S215M	17,14	3,24	4,07	6,74	3,55
DJ126M/S215M						



		C (m)	D (m)
SL122/J215M			
SL121/J135	SL122/J215M	4,07	6,74
SL121/S215M	SL121/J135	4	6,66
	SL121/S215M	4,07	6,74



	F	D	GB	E	I	P
○	Chantier	Baustelle	Site	Obra	Cantiere	Estaleiro



Document commercial non contractuel. Pour toute information technique se référer à la notice correspondante

Unverbindliches Vertriebsdokument. Für technische Informationen, siehe die entsprechenden Anweisungen.

This commercial document is not legally binding. For any technical information, please refer to the corresponding instructions.

Documento commercial non contractuel. Para cualquier información técnica, ver la noticia correspondiente.

Documento commerciale non vincolante. Per tutte le informazioni tecniche fare riferimento al catalogo istruzioni

Documento comercial não contratual. Para qualquer informação técnica complementar consultar as respectivas instruções



18, rue de Charbonnières - B.P.173
69132 ECULLY Cedex - France

Tél. : (33) 4 72 18 20 20
Fax. : (33) 4 72 18 20 00
www.manitowoccrane.com www.potain.com



Americas

Tel : +1 920 683 6322
Tel : +1 717 597 8121

Europe - Middle East - Africa

Tel : +(33) 4 72 81 50 00
Tel : +(44) 191 565 6281

Asia - Pacific

Tel : +(65) 6861 7133
Fax : +(65) 6862 4142

www.manitowoccrane.com

Igo 36

Réf. 2003 48 LXS 2

Copyright.Reproduction interdite © POTAIN 2003

Réalisation HeadLines